

WAFFLE MAKER





INDEX

| | |
|-------------------------------------|---|
| Safety instructions | 3 |
| Technical Specifications..... | 3 |
| Installation and use | 3 |
| Exploded view..... | 5 |
| Spare parts list | 6 |
| Electrical circuit..... | 7 |
| Maintenance and cleaning..... | 8 |
| Standards and directives..... | 9 |
| Device and packaging disposal | 9 |



SAFETY INSTRUCTIONS

- For your safety, do not store or use gasoline or other flammable vapors or liquids in the vicinity of this equipment. Keep the area free and clear of combustible.
- Improper installation, adjustment, alteration, service or maintenance can cause property damage, injury, or death. Read the installation operating and maintenance instructions thoroughly before installing, or servicing this equipment.
- Instructions must be posted in a prominent location. All safety precautions must be taken in the event the user smells gas.
- These models are designed, built, and sold for commercial use only. If these models are positioned so the general public can use the equipment, make sure that cautions, warnings, and operating instructions are clearly posted near each unit so that anyone using the equipment will use it correctly and not injure themselves or harm the equipment.
- **WARNING:** It is hazardous for anyone other than a trained person to carry out any service or repair operation.
- Before doing any maintenance or repair, contact your authorized service representative.
- This appliance can be used by children aged from 8 years and above and persons with reduced physical, sensory or mental capabilities or lack of experience and knowledge if they have been given supervision or instruction concerning use of the appliance in a safe way and understand the hazards involved. Children shall not play with the appliance. Cleaning and user maintenance shall not be made by children unless they are aged from 8 years and above and supervised.
- This product is intended for commercial use only.
- When the machine is working, do not touch the top plate of the machine to avoid high temperature burns.
- When the machine is not in use, the power should be cut off to avoid accidents.
- All maintenance work must be performed after cutting off the power supply. If the machine breaks down, do not disassemble it by yourself, please contact our after-sales service department or send it to the dealer for repair
- Do not spray water or put the machine in water for cleaning! Water conducts electricity, and the product may be damaged by water seepage or damp and leak electricity and hurt someone.
- If the power cord is damaged or aging, you must stop using it immediately, and replace the power cord with the same specification and model or contact the supplier.
- The machine housing, must be properly grounded to ensure safety.

TECHNICAL SPECIFICATIONS

| MODEL | VOLTAGE | POWER | PRODUT SIZE | G.W. (KG) |
|-------|-----------|-------|-----------------|-----------|
| GF-6 | 230V/50HZ | 1.4kw | 380*308.8*240mm | 9.3 |

INSTALLATION AND USE

After unpacking the waffle machine, place it in a safe place.

Remove all packing material from the device and remove any protective film. All

Materials used for packaging or protecting the device may melt and / or be combustible,

When the waffle machine is in operation, check the device carefully for possible damage. Check whether the power cord and plug are not connected

Do not operate the automatic waffle machine if you find any damage.

Contact your dealer immediately.

Check that the waffle machine is connected to an adequately protected grounded mains connection

Fuse is operated. In case of doubt, you must always bring in a qualified electrician.

The installation site must have adequate stability and should not wobble. The surface must be flat.

Also, no flammable objects must be placed near the appliance.

The place of installation must have sufficient ventilation (for example, exhaust hood).

In case of non-observance of these instructions, the manufacturer is not liable.

Before each use:

Clean the waffle machine by referring to the cleaning and maintenance instructions in this manual!

Check that only original parts are installed on the device and do not use any spare parts not from the manufacturer



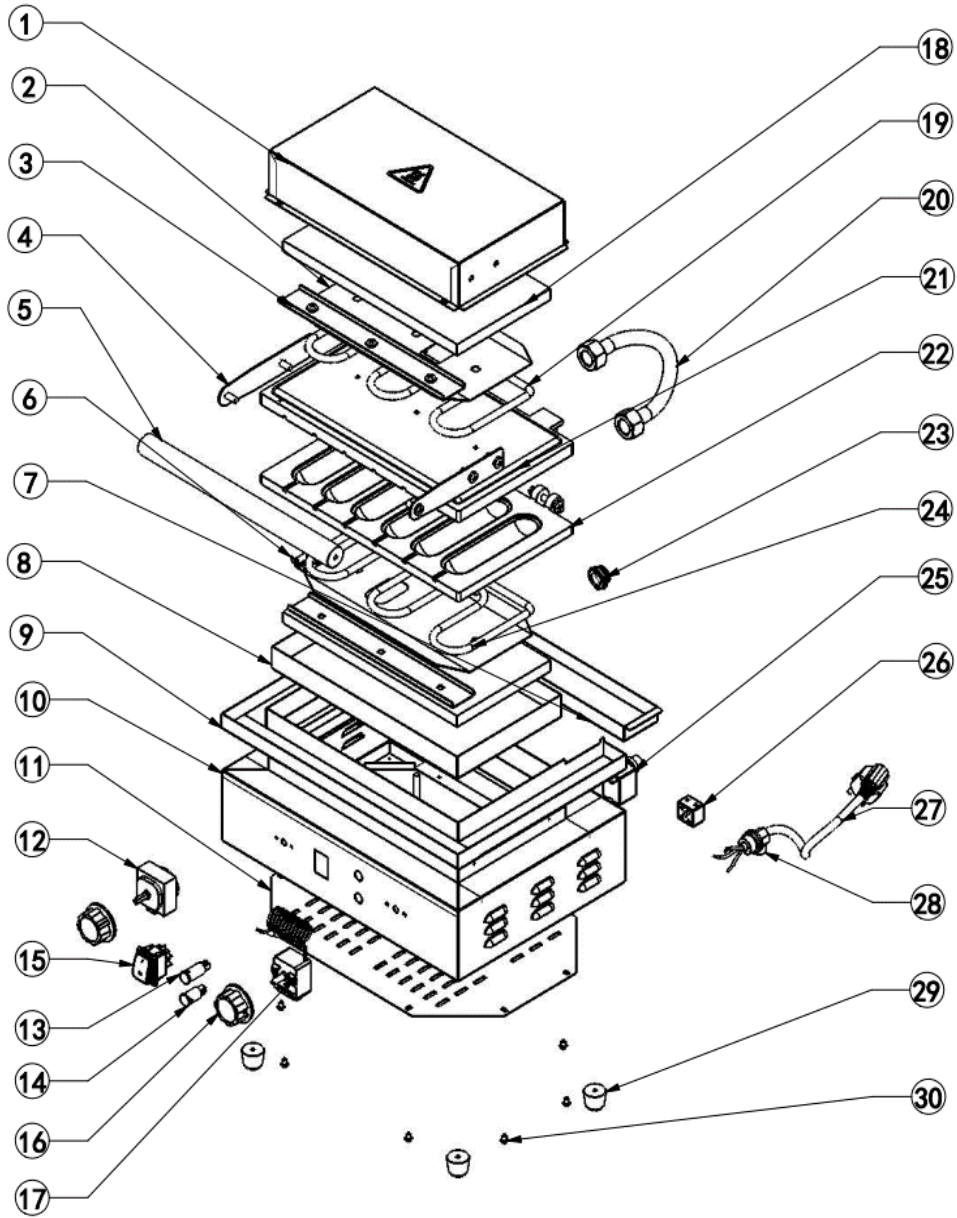
Only original spare parts are permitted to avoid hazards such as fire, electrical shock or mechanical damage and injury

Check the unit for possible damage and cracks, e.g. Also on the housing. Install the unit

Do not damage, but bring it to an authorized dealer.

 **DANGER : Make sure that the housing, cable and plug are not wet.**

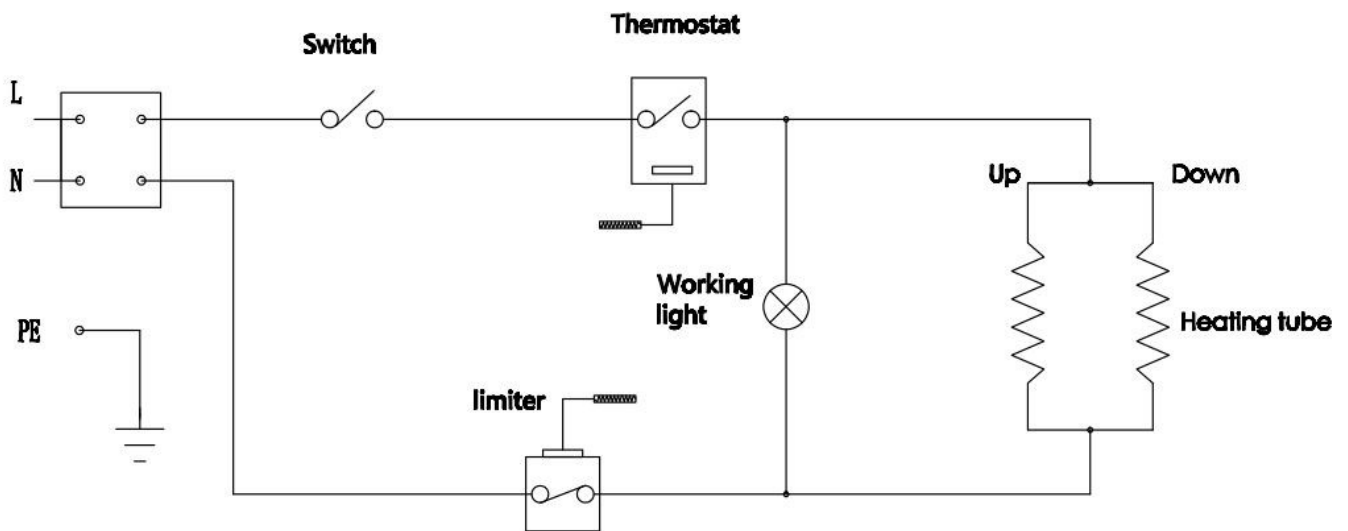
EXPLODED VIEW



SPARE PARTS LIST

| SPARE PARTS LIST GF-6 | | |
|-----------------------|--------------------------------|---------|
| NO. | Name | REF L2G |
| 1 | Cover plate | |
| 2 | Heating pipe partition | |
| 3 | Heating tube layering | |
| 4 | Handle fixing plate | |
| 5 | Ø25 POM stick | GF-6-5 |
| 6 | Probe clip plate | |
| 7 | Oil box (small) | GF-6-7 |
| 8 | Insulation cotton fixing plate | |
| 9 | Oil box (big) | GF-6-9 |
| 10 | Housing | |
| 11 | Bottom plate | |
| 12 | Timer | GF-6-12 |
| 13 | Indicator light (yellow) | GF-6-13 |
| 14 | Indicator light (green) | GF-6-14 |
| 15 | Switch | GF-6-15 |
| 16 | Knob | GF-6-16 |
| 17 | Thermostat | GF-6-17 |
| 18 | Insulation cotton | |
| 19 | Heating element (upper) | GF-6-19 |
| 20 | Tube | |
| 21 | Waffle plate (upper) | |
| 22 | Waffle plate (bottom) | |
| 23 | Copper tube | |
| 24 | Heating element (bottom) | GF-6-24 |
| 25 | Cut out | GF-6-25 |
| 26 | Ceramic terminal block | GF-6-26 |
| 27 | Power cord | GF-6-27 |
| 28 | Cable | GF-6-28 |
| 29 | Rubber feet | GF-6-29 |
| 30 | Screw | |

ELECTRICAL CIRCUIT





MAINTENANCE AND CLEANING

DANGER :

Be sure to disconnect the unit from the mains before cleaning. Never unplug the power cord Cable from the mains connection! This can damage the cable and cause electrical shock.

The waffle machine is very strong due to its stainless steel case and the special non-stick coating easy to clean.

Before cleaning, make sure the waffle maker is switched off. Check this at the double welding irons are essential for both devices as they can be switched on and off separately.

After switching the equipment off, wait until the appliance has cooled down. At least 20 minutes.

The appliance must not be hotter than hand warm before cleaning.

Never use sharp detergents for cleaning. These can damage the device as such.

To clean the case and wrench, you can use a damp cloth with a mild detergent

Never use a wet or dripping detergent.

Water could penetrate the housing and get an electrical short circuit. There is danger for life.

Also pay attention to the power cord does not come into contact with water.

If inadvertently some water has come into the unit and there is a risk of the water in the unit, Do not use the waffle iron for the time being. Have the appliance checked by an expert.

DANGER : DO NOT expose the unit to water. The appliance must not be immersed in water, nor is it allowed to do so (E.g., with a hose). There is a DANGER OF LIFE!

Maintenance

The maintenance is limited to checking the mains plug, which must be checked for integrity before each use

And to the tightly turned spiral handles, as well as to the test of all screws (covers) for a tight fit.

If the unit malfunctions, contact your dealer or the address at the end of this manual.



STANDARDS AND DIRECTIVES

Meaning of crossed out wheeled dustbin:

Do not dispose of electrical appliances as unsorted municipal waste, use separate collection facilities.

Contact your local government for information regarding the collection systems available.

If electrical appliances are disposed of in landfills or dumps, hazardous substances can leak into the groundwater and get into the food chain, damaging your health and well-being.

When replacing old appliances with new ones, the retailer is legally obligated to take back your old appliance for disposals at least free of charge.

The device complies with current EU standards and directives. If necessary, we will send you the corresponding declaration of conformity.

Packaging disposal

Please separate the packaging materials accordingly and return them to the responsible collection points for recycling and environmental housing.



Device disposal

once the appliance has been used up, dispose of it properly at a collection point for electrical appliances. Electrical appliances do not belong in household waste.

Your responsible administration will inform you about the addresses and opening hours of collection points. This is the only way to ensure that old appliances are properly disposed of and recycled. Thank you very much!





CE